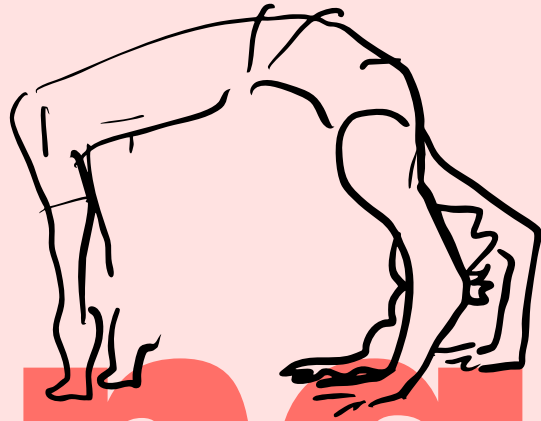
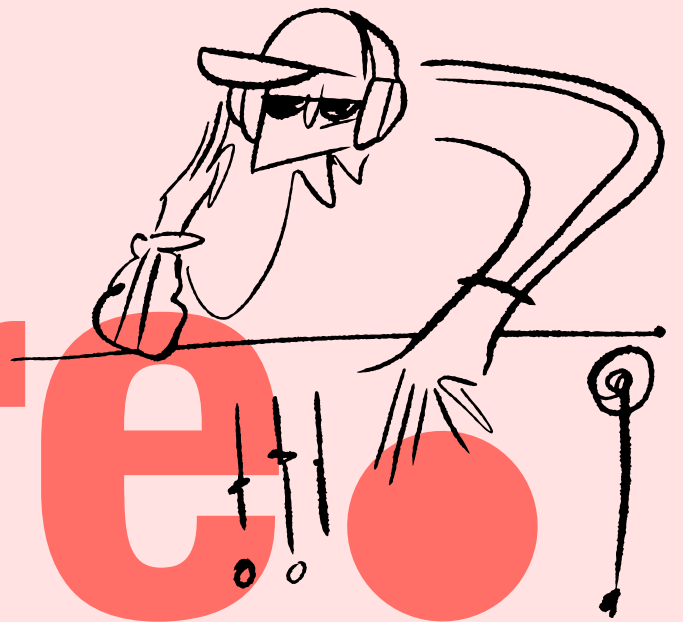


Society  
Building  
Fitzrovia

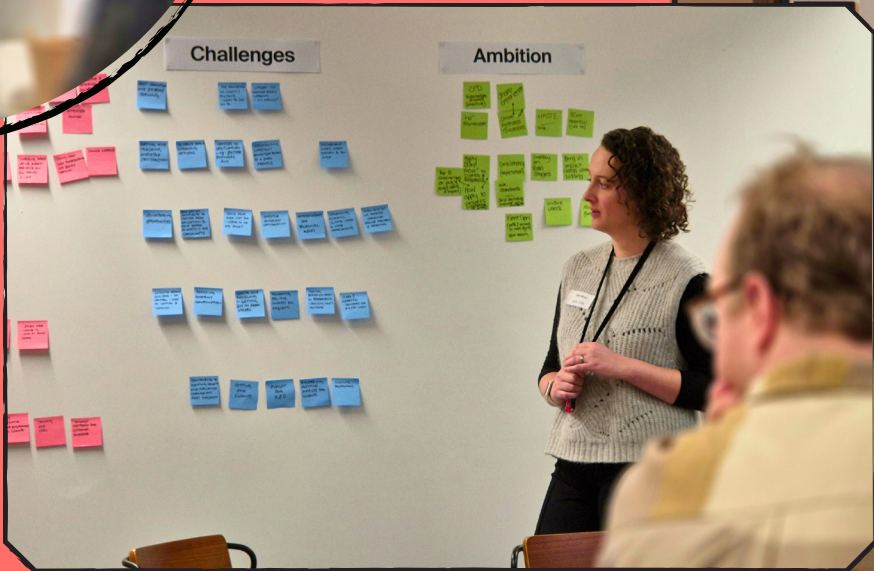


# Meeting & Venue hire





Welcome to the Society Building Fitzrovia.  
A collaborative workspace to inspire  
ideas and action across the built environment.

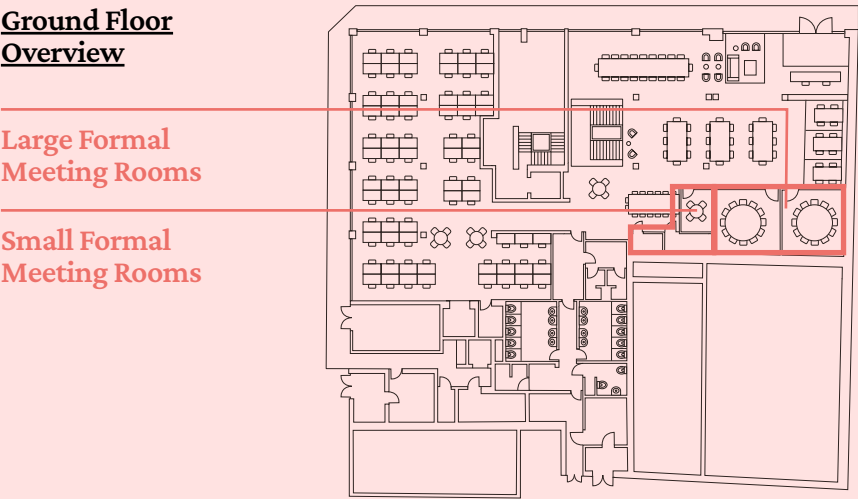




# Formal Meeting Rooms

- Spaces  
**Large**  
Room 1: 269 SqFt  
Room 2: 291 SqFt  
— Both capacity: x12 seated
- Medium**  
Room 3: 100 SqFt  
— Capacity: x4 seated
- Small**  
Rooms 4 & 5  
— Capacity: x2 seated
- Catering options available

- Equipment  
— TV Screens  
— Video Call & Screen-share  
— Zoom Conferencing  
— Recording Technology  
— Flip Charts  
— Magnetic Wall in Rooms 1 & 2
- Usage  
— Presentations  
— Board Meetings  
— Formal Meetings  
— Design Reviews  
— Project Reviews  
— Video Conferences  
— Training Sessions



- Pricing  
**Non-Members P/Hr**  
— Large Meeting: £70  
— Medium Meeting: £45  
— Small Meeting: £25
- Members**  
— Discount applied to all rates



# Casual Meeting Space

**Spaces**

**Interactive Conference Table**

- Capacity: x20 seated

**Network Area**

**548 SqFt**

- Capacity: x60 seated
- Evening & Weekends only

In addition, you can hire out the area for a reception style event with capacity up to 200 people.

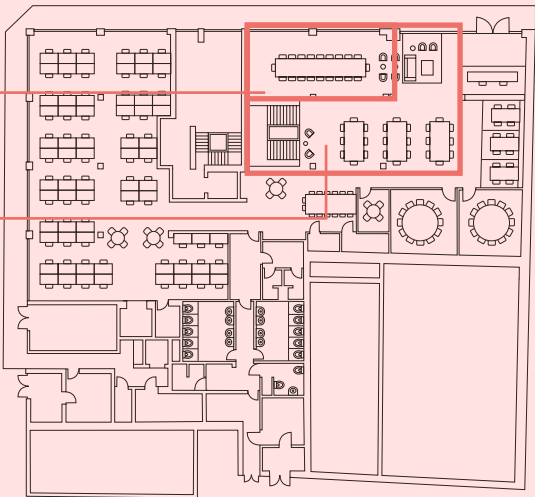
Catering options available

- Equipment**
- Interactive TV Screen
  - Video Call & Screen-share
  - Zoom Conferencing
  - Recording Technology
  - Flip Charts
- Usage**
- Panel Discussions
  - Informal Meetings
  - Workshops & Reviews
  - Training Sessions
  - Project Reviews
  - Catered Dinners
  - Social Occasions
  - Network Events

**Ground Floor Overview**

Interactive Conference Table

Casual Meeting Space



**Pricing**

**Non-Members**

- Hourly: £60
- Half-day (Mon-Fri): £220
- Full-day (Mon-Fri): £460

In addition, prices for full network area (weekends and evenings only)

- Half-day (W/end): £600
- Full-day (W/end): £1000
- Evening (18:00-23:00): £600

**Members**

- Discount applied to all rates





# Pods

**Spaces**

Three Acoustic Pods

- Each seats 4 people



**Equipment**

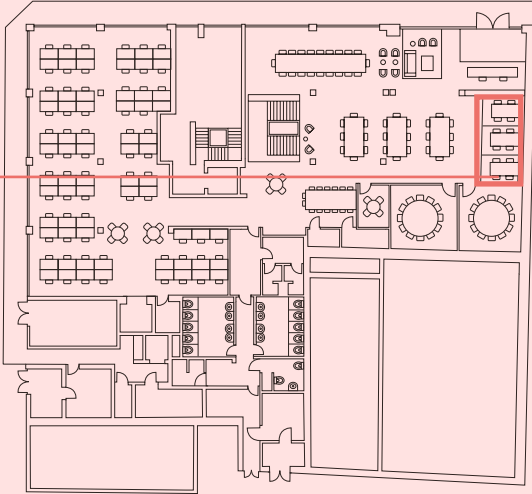
- Controlled Lighting
- Ventilation

**Usage**

- Recording webinars
- Team Meetings

**Ground Floor Overview**

Pods



**Pricing**

Non-Members

- Hourly: £50

Members

- Hourly: £40



# Conference & Events

## Spaces

### Conference & Events Space 687 SqFt

- Theatre: x80
- Reception: x120
- Classroom: x60
- Boardroom: x20
- U-Shape: x20

### Downstairs Lounge Space 431 SqFt

In addition, our downstairs reception lounge can also be booked at an extra charge and has the capacity of 120 people.

Catering options available

## Equipment

- TV Screens
- AV Equipment
- Video Call & Screen-share
- Zoom Conferencing
- Microphones
- Recording Technology
- Flip Charts
- Sound System
- Dimmable Lighting

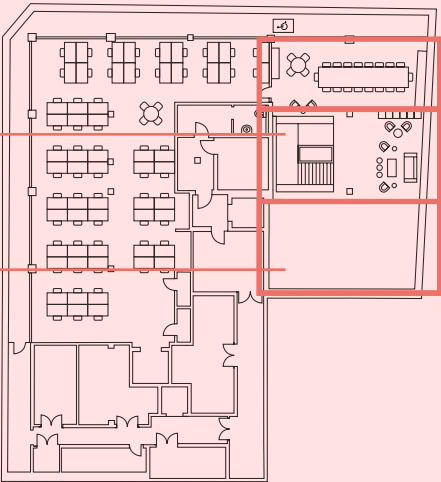
## Usage

- Training Sessions
- Conferences & Talks
- Presentations
- Workshops & Reviews
- Board Meetings
- Fitness Classes
- Parties & Social Occasions
- Design Team Meetings

## Lower Ground Overview

### Lounge Space

### Conference & Event Space



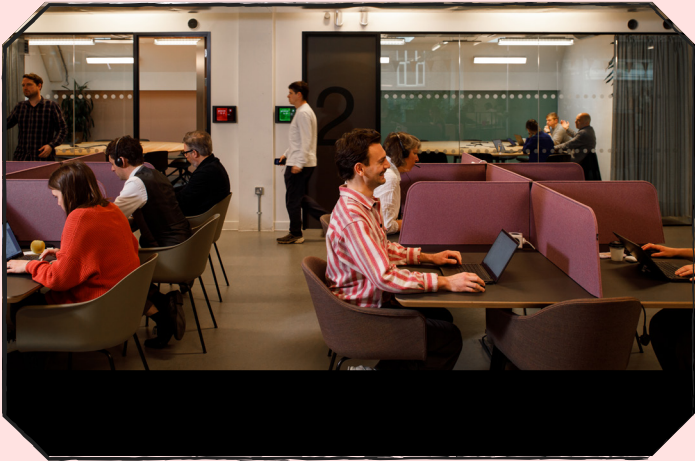
## Pricing

### Non-Members

- Hourly: £120
- Half-day (Mon-Fri): £460
- Full-day (Mon-Fri): £940
- Half-day (W/end): £600
- Full-day (W/end): £1000
- Evening (18:00-23:00): £600

### Members

- Discount applied to all rates





# Costs & Conditions

## Staff

Quoted and charged for events that are outside of normal office hours.

## Cleaning

Quoted and charged depending on scale of the event.

## Deposits & Cancellation Fees

50% deposit is due upon confirmation of your booking.

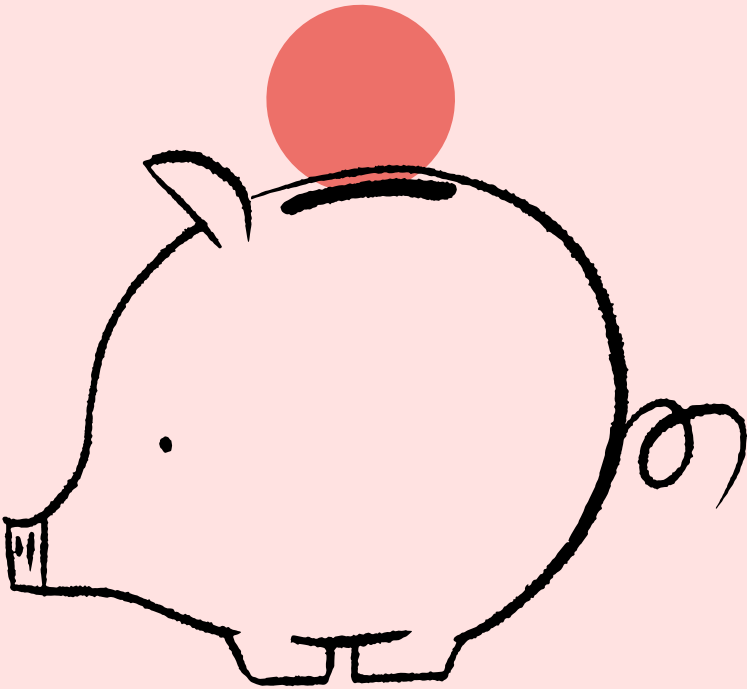
Cancellation fees may apply, please enquire for more details.

## Catering

We have catering packages available depending on the event you are hosting. Please enquire for more detail.

- Meeting Package: £7 pp
- Breakfast Package: £12 pp
- Lunch Package: £15 pp
- Premium Lunch Package: £20 pp
- Dinner: Priced upon request
- Events: Priced upon request

We can accommodate a variety of dietary requirements.



# Location & Contact

100%  
SOCIETY  
BUILDING

## Contact

T +44(0)20-7499-5888  
E [info@thesocietybuilding.org](mailto:info@thesocietybuilding.org)  
[thesocietybuilding.org](http://thesocietybuilding.org)

## Address

The Society Building  
55 Whitfield Street, Fitzrovia,  
London, W1T 4AH

## Connectivity

- King’s Cross & Eurostar,  
15 minute walk
- Euston, 10 minute walk

## Close by to:

- Victoria Line & Gatwick  
Express
- Central Line & The City
- Circle Line & Heathrow  
Express

